



ORBIT HOMES

FIXED PRICE H&L PACKAGE



32sq



\$534,000

Brooklyn 183 (Coastal)

Lot 5147, Harvest Home Road
Aurora Estate, Epping

Land Size: 192m²

Inclusions:

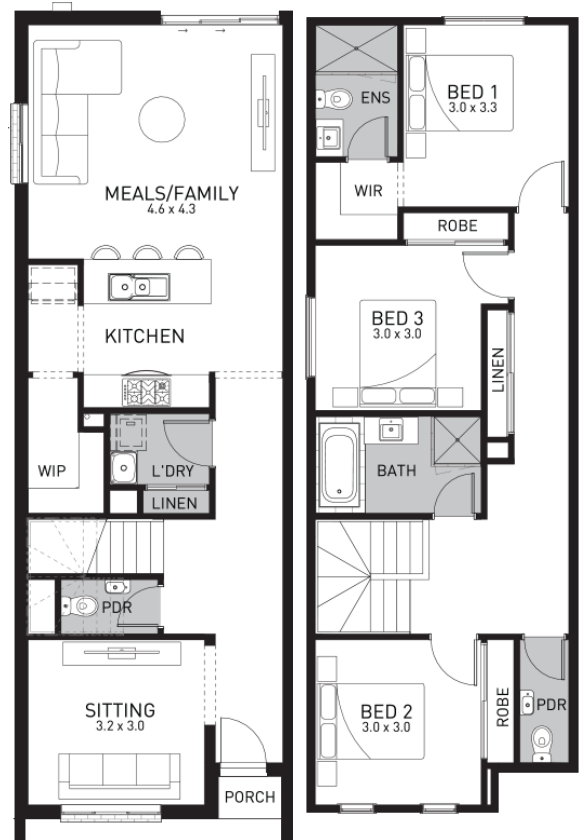
- FIXED site costs & rock removal and excavation
- All developer & council requirements included
- Colorbond® corrugated roof to house and garage
- 2550 ceiling height to ground floor
- Quality floor coverings throughout
- LED downlights as per plan
- Stainless Steel Appliances
- Caesarstone Benchtops
- Heating & Cooling
- Sectional Panelift Garage Door (with Remotes)
- 25 Year Structural Guarantee
- House & land deposit 10% of total price - settlement on completion



Contact: Ricardo Rodrigues

E ricardo.rodrigues@orbithomes.com.au

M 0407 806 893



Orbit Homes Australia Pty Ltd • CDB-U 50505 • Orbit Homes Queensland Pty Ltd QBSA LIC 716019 • Facade illustrations are used as a guide only, excludes upgrades such as but not limited to feature stone and tiles, Refer to façade guide for standard inclusions. Images used are for visual purposes only. Upgraded fixtures, fittings and design items may be shown, these can be selected at additional costs, please refer to a Sales Consultant for further information or to upgrades book for optional extras. Any allowances included for fencing and landscaping are to be completed by customer after handover. Customer connection fees to power and telephone not included. Prices subject to change without notice. Not to be used with any other offer. Progress payments on construction. Excludes stamp duty and costs. House and land package total price may include developer incentives & rebates and any builder referral fees at the time of issue. Developer incentives & rebates and any builder referral fees may be withdrawn at any time to the discretion of the land developer.

Land price = \$240,000 | Date created 16/03/2021 | Valid for 60 days.



BOTANICAL

Orbit Homes Display Centre
Mickleham, Victoria

