



ORBIT HOMES

FIXED PRICE H&L PACKAGE



- ✓ Flooring throughout
- ✓ 2700 high ceilings<sup>#</sup>
- ✓ Upgraded internal doors<sup>\*</sup>

22sq  4  2  2  2

**\$716,000**

## Caulfield 209 (Sagres Facade)

Lot 1033, Musical Avenue  
Orana Estate, Clyde North

Land Size: 447m<sup>2</sup>

### Inclusions:

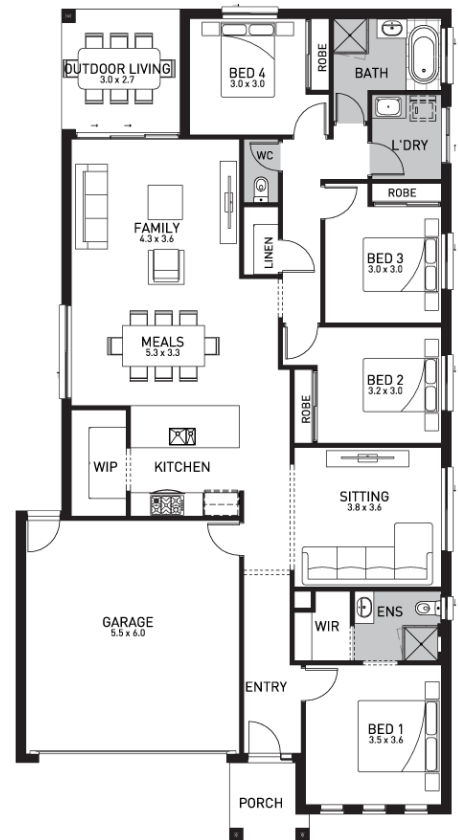
- Orbit Homes Premium Inclusions
- 25 Year Structural Guarantee
- Fixed Price Site Costs
- Developer Estate and Council Requirements
- 2700mm High Ceilings (Ground Floor only)
- 2340mm High Internal Doors
- 900mm ILVE Stainless Steel Appliances
- Caesarstone benchtops throughout including laundry
- Quality Floor Coverings throughout
- Concrete to Driveway and Porch (up to 35sqm)
- PLUS MORE



Contact: **Molly Trapnell**

E [molly.trapnell@orbithomes.com.au](mailto:molly.trapnell@orbithomes.com.au)

M 0403 242 060



Orbit Homes Australia Pty Ltd • CDB-U 50505 • Orbit Homes Queensland Pty Ltd QBSA LIC 716019 • Facade illustrations are used as a guide only, excludes upgrades such as but not limited to feature stone and tiles, Refer to façade guide for standard inclusions. Images used are for visual purposes only. Upgraded fixtures, fittings and design items may be shown, these can be selected at additional costs, please refer to a Sales Consultant for further information or to upgrades book for optional extras. Any allowances included for fencing and landscaping are to be completed by customer after handover. Customer connection fees to power and telephone not included. Prices subject to change without notice. Not to be used with any other offer. Progress payments on construction. Excludes stamp duty and costs. House and land package total price may include developer incentives & rebates and any builder referral fees at the time of issue. Developer incentives & rebates and any builder referral fees may be withdrawn at any time to the discretion of the land developer.



Land price = \$435,000 | Date created 15/11/2021 | Valid for 60 days.

# ELISTON

Orbit Homes Display Centre  
Clyde, Victoria

