



ORBIT HOMES



8%
LEASE-
BACK



\$695,000

ASPENDALE 237 (VOGUE FACADE)

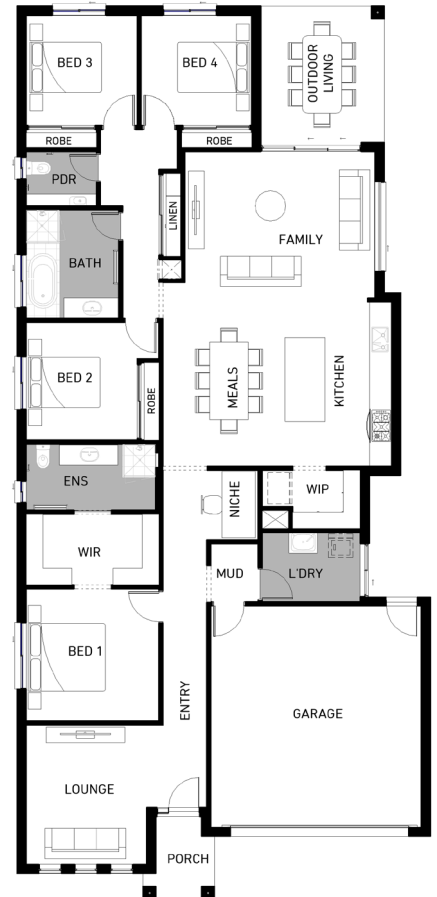
LOT 6173 WAVERTREE CRESCENT, HARPLEY (WERIBEE)

INCLUSIONS

- Premium Inclusions
- Fully landscaped and automatic sprinklers
- Concrete paving driveway, porch and rear paving
- Evaporative cooling system
- Light fittings as installed
- Dishwasher installed & stainless steel appliances
- Carpet floor coverings and floor tiles as per plan
- Display Only Window coverings as installed
- Solar HWS - 6 star energy rating
- Security Alarm System
- Caesarstone bench tops to kitchens and bathrooms
- Recycled water connections to toilets and 2 external taps
- 2700mm ceiling height to the ground floor

PLUS MANY DISPLAY LUXURY UPGRADES

HOUSE SIZE:	25.6 SQ
LAND SIZE:	400m ²



Orbit Homes Australia Pty Ltd • CDB-U 50505 ORBIT HOMES QUEENSLAND PTY LTD • QBSA 716019
 Facade illustrations are used as a guide only. Internal photographs are for visual purposes only. Customer connection fees to power and telephone not included. Rates and outgoings paid by Buyer. Subject to lease agreement. Garden & house maintenance by Orbit Homes. Furniture and display items not included.

1300 672 484 | orbithomes.com.au |

