



ORBIT HOMES

HOUSE AND LAND

Le Tre
Sorelle

4
 2
 2

FHB* \$430,775
\$440,775

SOFIA 210 (MADRID)

LOT 924 SLATE WAY, ATHERSTONE - MELTON SOUTH

INCLUSIONS

- Orbit Homes Classic Inclusions - refer to full specification for details
- 2550mm high ceilings throughout
- Aluminium sliding powder coated finish to external windows and doors
- Class H1 concrete waffle pod slab design
- Recycled water connections
- Garage as per plans with sectional panel lift door and remote control
- NBN wiring to the house including conduit, (1) data point & digital tv antenna
- All estate requirements
- Sofia - Move in Pack
 - Tiles to entry, kitchen, walk in pantry, meals and family
 - Carpet to bedrooms, walk in robe, rear passage, sitting room
 - Colour concrete to driveway and front porch
 - Window locks and fly screens to all operable windows

For more information please speak to one of our friendly
new homes sales consultants

HOUSE PRICE: \$199,925*

LAND PRICE: \$230,850*

LAND SIZE: 350m²

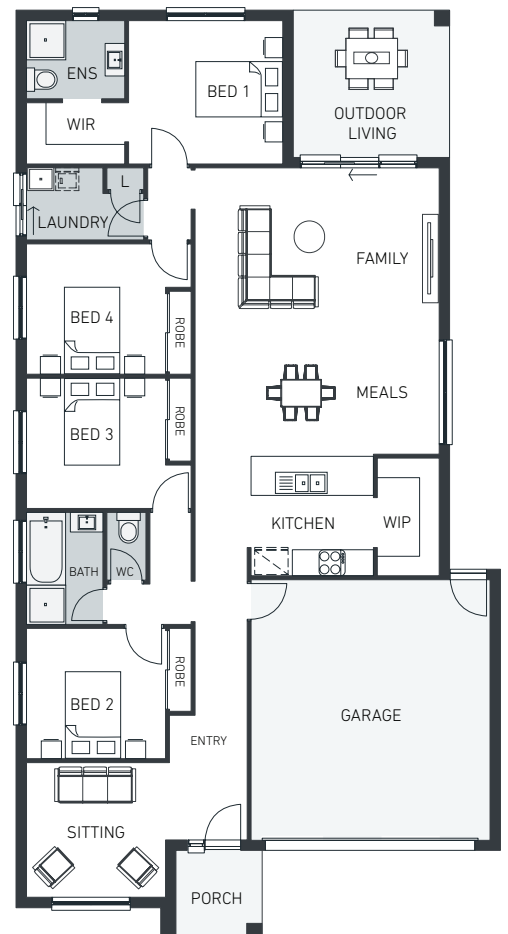


Peter Kryvonosov

E peterk@orbithomes.com.au

M 0426 878 115

Orbit Homes Australia Pty Ltd • CDB-U 50505 Facade illustrations are used as a guide only, excludes feature stone and tiles. Internal photographs are for visual purposes only. Upgraded fixtures, fittings and design items may be shown, these can be selected at additional costs, please refer to a sales consultant for further information. Price excludes timber floors, dishwasher, landscaping, decks, pergolas and BBQs. Customer connection fees to power and telephone not included. Prices subject to change without notice. Progress payments on construction. Refer to display extras list for optional extras. Not too be used with any other offer. Excludes stamp duty and costs. Land contract with developer. Excludes excavation and removal of any rock, deep sewer connections and re-pegging to block, if required.


Orbit
HOMES

1300 672 484 | orbithomes.com.au |