



4
 2
 2
 2

\$520,115

SOFIA 209 (SAGRES)

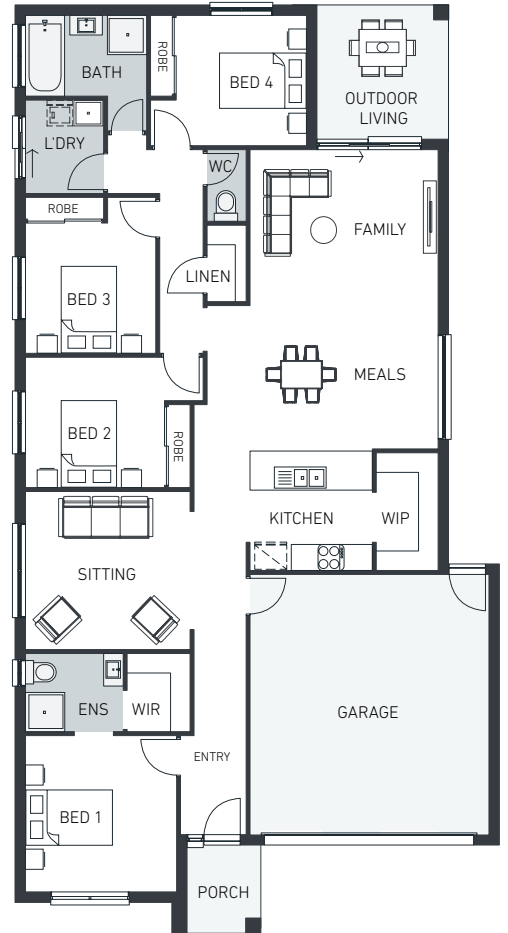
LOT 807 DODSON ROAD , LAVENDER - OFFICER

INCLUSIONS

- Orbit Homes Classic Inclusions
- 2400mm high ceilings throughout
- Aluminium sliding powder coated finish to external windows and doors
- Solar hot water
- Garage as per plans with sectional panel lift door and remote control
- Semi-framed shower screen to ensuite
- Laminate benchtops to kitchen and wet areas
- Chef 600mm electric underbench oven and cooktop
- Polished edge mirrors
- Tiled shower base
- Classic Collection Upgrade Offers - Move in Pack

For more information please speak to one of our friendly new homes sales consultants!

HOUSE PRICE:	\$197,115*
LAND PRICE:	\$323,000*
LAND SIZE:	380m ²



JP Cliquet

E jpcliquet@orbithomes.com.au

M 0452 186 607



orbithomes.com.au | 1300 ORBITHOMES | 1300 672 484

