



ORBIT HOMES

FIXED PRICE H&L PACKAGE



- ✓ 10 Roller Blinds
- ✓ Flooring Throughout
- ✓ Concrete Driveway up to 35m²

15sq



\$423,511

Carlton 140 (Metro Facade)

Lot 35329, Callicoma Street
Highlands Estate, Craigieburn

Land Size: 213m²

Inclusions:

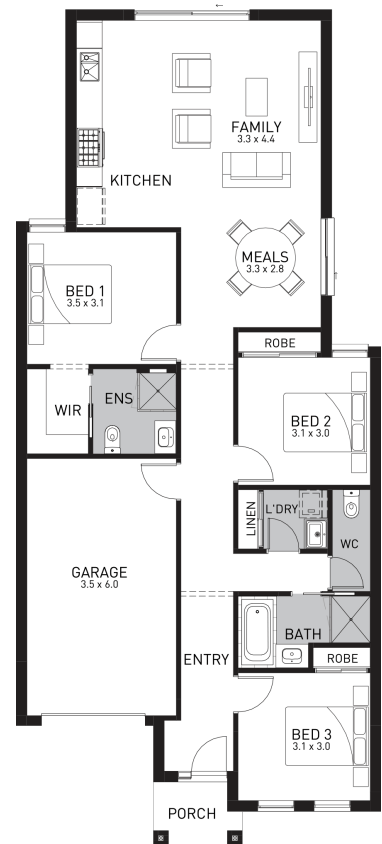
- Fixed site costs including rock removal & MORE!
- All estate and council requirements
- COLORBOND® panelift garage door (including remotes)
- European ILVE 600mm Stainless Steel appliances
- Lovelight Roller Blinds (up to 10 included)
- Overhead Kitchen Cupboards (as per standard plan)
- Quality floor coverings throughout
- Concrete to Driveway & Outdoor Living (if applicable – up to 35sq.)
- 25 Year Structural Guarantee
- PLUS, MORE!



Contact: Rohit Neb

E rohitn@orbithomes.com.au

M 0405 903 096



Orbit Homes Australia Pty Ltd • CDB-U 50505 • Orbit Homes Queensland Pty Ltd QBSA LIC 716019 • Facade illustrations are used as a guide only, excludes upgrades such as but not limited to feature stone and tiles, Refer to façade guide for standard inclusions. Images used are for visual purposes only. Upgraded fixtures, fittings and design items may be shown, these can be selected at additional costs, please refer to a Sales Consultant for further information or to upgrades book for optional extras. Any allowances included for fencing and landscaping are to be completed by customer after handover. Customer connection fees to power and telephone not included. Prices subject to change without notice. Not to be used with any other offer. Progress payments on construction. Excludes stamp duty and costs. House and land package total price may include developer incentives & rebates and any builder referral fees at the time of issue. Developer incentives & rebates and any builder referral fees may be withdrawn at any time to the discretion of the land developer.

Land price = \$220,000 | Date created 21/01/2021 | Valid for 60 days.



HIGHLANDS

Orbit Homes Display Centre
Craigieburn, Victoria



Whitfield Cres

Highlander Dr

Craigieburn Rd

