



ORBIT HOMES

FIXED PRICE H&L PACKAGE



60sq



5



5



5



2

\$1,513,809

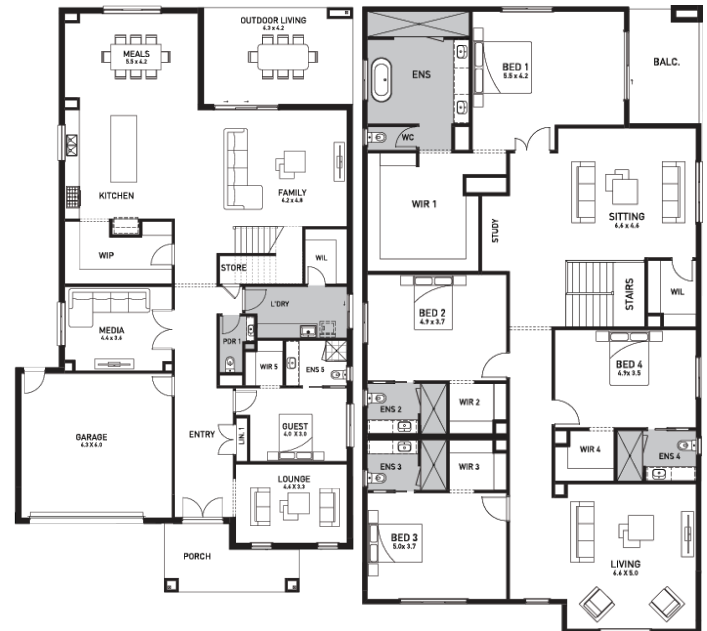
Portsea 60 (FRENCH PROVINCIAL MKI (Balcony))

Lot 5635, Fellows Road
Merrifield, Mickleham

Land Size: 824m²

Inclusions:

- 7 Star energy rating + Solar PV system
- Fixed Price Site Costs, Developer & Council Requirements
- Alarm, CCTV system & Video Doorbell
- Double Glazed Windows + Doors
- 2700mm High Ceilings to Ground Floor
- 2340mm High Doors to Ground Floor
- Butlers Pantry with Sink
- Fully Stained Timber Staircase
- Downlights Throughout
- Floor to ceiling tiles to Ensuite
- Freestanding Bath to Ensuite
- SMEG Kitchen Appliances & Dishwasher
- Quality Floor Coverings throughout
- Timberlook Garage door
- 12-month maintenance period



Merrifield
Contact: Gerard Vitolo

E gerard.vitolo@orbithomes.com.au

M 0425 731 098

Orbit Homes Australia Pty Ltd • CDB-U 50505 • Orbit Homes Queensland Pty Ltd QBSA LIC 716019 • Facade illustrations are used as a guide only, excludes upgrades such as but not limited to feature stone and tiles, Refer to facade guide for standard inclusions. Images used are for visual purposes only. Upgraded fixtures, fittings and design items may be shown, these can be selected at additional costs, please refer to a Sales Consultant for further information or to upgrades book for optional extras. Any allowances included for fencing and landscaping are to be completed by customer after handover. Customer connection fees to power and telephone not included. Prices subject to change without notice. Not to be used with any other offer. Progress payments on construction. Excludes stamp duty and costs. House and land package total price may include developer incentives & rebates and any builder referral fees at the time of issue. Developer incentives & rebates and any builder referral fees may be withdrawn at any time to the discretion of the land developer.

Land price = \$740,000 | Date created 27/01/2026 | Valid for 60 days.

Orbit
HOMES