



ORBIT HOMES

FIXED PRICE H&amp;L PACKAGE



22sq



\$855,319

## Caulfield 23 (OTWAY)

Lot 4, Esperence Crescent  
Kingston Haven, Ocean Grove

Land Size: 515m<sup>2</sup>

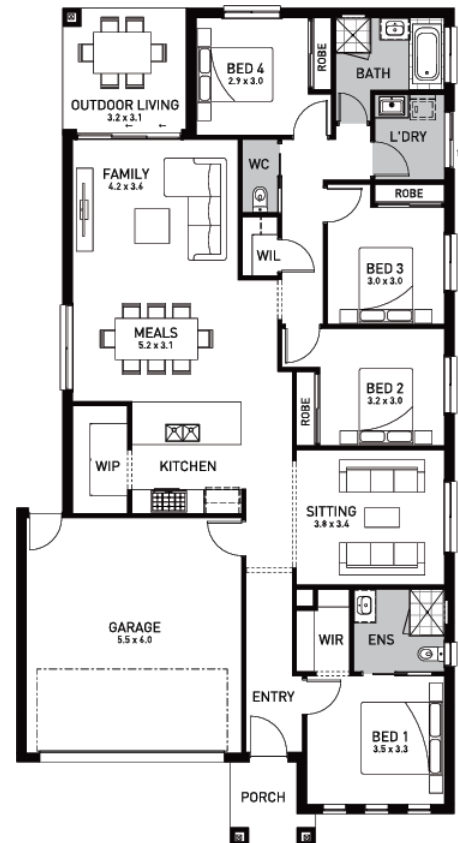
### Inclusions:

- Electrify Your Home - Fully ducted reverse cycle heating/cooling system including Izone Nova controller + SMEG induction cooktop
- 7 Star energy rating + Solar PV system
- Fixed Price Site Costs, Developer & Council Requirements
- Alarm, CCTV system & Video Doorbell
- Double Glazed Windows + Doors
- 2700mm High Ceilings throughout
- 2340mm high doors throughout
- Butlers Pantry with Sink
- Downlights Throughout
- Floor to ceiling tiles to Ensuite
- SMEG Kitchen Appliances & Dishwasher
- Quality Floor Coverings throughout
- Timberlook Garage door
- 12-month maintenance period
- \*Including preferred builder land rebate \* Price displayed is

subject to eligibility for the Kingston Haven preferred builder, land rebate program. T&C's Apply & MUCH MORE!

Contact: **James Hill**  
E [james.hill@orbithomes.com.au](mailto:james.hill@orbithomes.com.au)

M 0458 588 078



**ORBIT HOMES**  
Orbit Homes Australia Pty Ltd • CDB-U 50505 • Orbit Homes Queensland Pty Ltd QBSA LIC 716019 • Facade illustrations are used as a guide only, excludes upgrades such as but not limited to feature stone and tiles, Refer to facade guide for standard inclusions. Images used are for visual purposes only. Upgraded fixtures, fittings and design items may be shown, these can be selected at additional costs, please refer to a Sales Consultant for further information or to upgrades book for optional extras. Any allowances included for fencing and landscaping are to be completed by customer after handover. Customer connection fees to power and telephone not included. Prices subject to change without notice. Not to be used with any other offer. Progress payments on construction. Excludes stamp duty and costs. House and land package total price may include developer incentives & rebates and any builder referral fees at the time of issue. Developer incentives & rebates and any builder referral fees may be withdrawn at any time to the discretion of the land developer.

Land price = \$478,500 | Date created 07/01/2026 | Valid for 60 days.

**Orbit  
HOMES**

# SANCTUARY SPRINGS

Orbit Homes Display Centre  
**Leopold, Victoria**

**Orbit**  
HOMES

