



ORBIT HOMES

FIXED PRICE H&L PACKAGE

**\$777,646**

Malvern 23B (Kobe)

Lot 3085, Kumi Street
Smiths Lane, Clyde North

Land Size: 350m²

Inclusions:

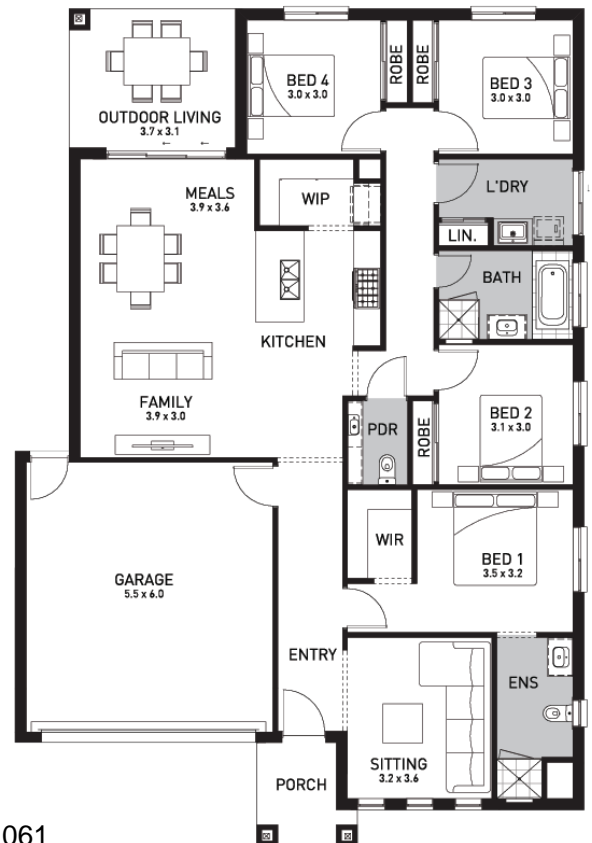
- Orbit Homes Classic 2025 Inclusions
- 12-month maintenance period
- Fixed Price Site Costs, Developer & Council Requirements
- Double Glazed Windows & Doors
- 2400mm High Ceilings Throughout
- Technika 600mm Appliances
- Quality Floor Coverings throughout
- Concrete to Driveway and Porch (up to 35sqm)
- Solar PV System



Contact: Sean Green

E sean.green@orbithomes.com.au

M 0436 112 061



Orbit Homes Australia Pty Ltd • CDB-U 50505 • Orbit Homes Queensland Pty Ltd QBSA LIC 716019 • Facade illustrations are used as a guide only, excludes upgrades such as but not limited to feature stone and tiles, Refer to facade guide for standard inclusions. Images used are for visual purposes only. Upgraded fixtures, fittings and design items may be shown, these can be selected at additional costs, please refer to a Sales Consultant for further information or to upgrades book for optional extras. Any allowances included for fencing and landscaping are to be completed by customer after handover. Customer connection fees to power and telephone not included. Prices subject to change without notice. Not to be used with any other offer. Progress payments on construction. Excludes stamp duty and costs. House and land package total price may include developer incentives & rebates and any builder referral fees at the time of issue. Developer incentives & rebates and any builder referral fees may be withdrawn at any time to the discretion of the land developer.

Land price = \$448,000 | Date created 15/12/2025 | Valid for 60 days.

**Orbit
HOMES**

SMITHS LANE

Orbit Homes Display Centre
Clyde North, Victoria

Orbit
HOMES

