



ORBIT HOMES

FIXED PRICE H&L PACKAGE



DEVELOPER LAND REBATE AVAILABLE*

20sq



\$735,234

Malvern 20B (MADRID)

Lot 326, Cherish Street
Society 1056 , Fraser Rise

Land Size: 350m²

Inclusions:

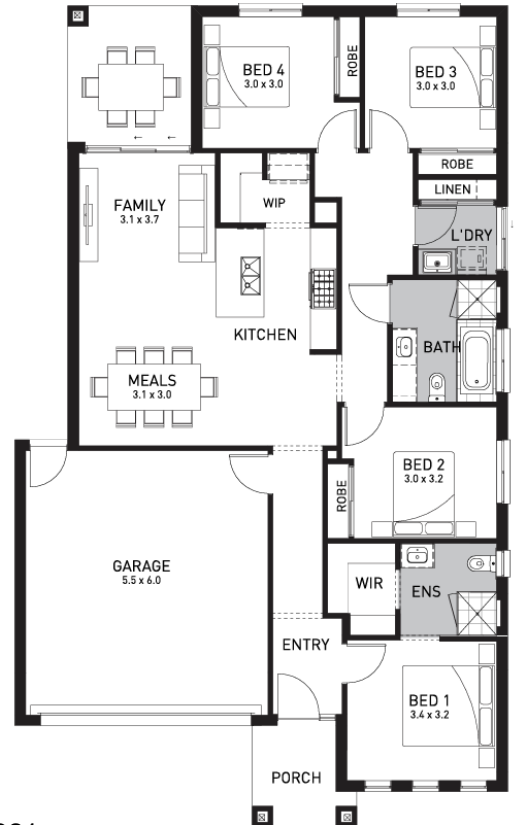
- Orbit Homes Premium 2025 Inclusions
- 12-month maintenance period
- Fixed Price Site Costs, Developer & Council Requirements
- Double Glazed Windows & Doors
- 2550mm High Ceilings Throughout
- Downlights Throughout
- SMEG 900mm Appliances & Dishwasher
- Quality Floor Coverings throughout
- Concrete to Driveway and Porch (up to 35sqm)
- Solar PV System
- * Developer Land Rebate Available T&C's Apply

Society1056

Contact: Damian Quigley

E damian.quigley@orbithomes.com.au

M 0426 831 321



Orbit Homes Australia Pty Ltd • CDB-U 50505 • Orbit Homes Queensland Pty Ltd QBSA LIC 716019 • Facade illustrations are used as a guide only, excludes upgrades such as but not limited to feature stone and tiles, Refer to façade guide for standard inclusions. Images used are for visual purposes only. Upgraded fixtures, fittings and design items may be shown, these can be selected at additional costs, please refer to a Sales Consultant for further information or to upgrades book for optional extras. Any allowances included for fencing and landscaping are to be completed by customer after handover. Customer connection fees to power and telephone not included. Prices subject to change without notice. Not to be used with any other offer. Progress payments on construction. Excludes stamp duty and costs. House and land package total price may include developer incentives & rebates and any builder referral fees at the time of issue. Developer incentives & rebates and any builder referral fees may be withdrawn at any time to the discretion of the land developer.

Land price = \$415,000 | Date created 25/03/2025 | Valid for 60 days.



HARPLEY ESTATE

Orbit Homes Display Centre
Werribee, Victoria

