

DISPLAY HOME FOR SALE

6%  
LEASE-  
BACK



4 2 2 2 241m<sup>2</sup> (26sq) 455m<sup>2</sup> \$1,100,000 - \$1,150,000

## RIPPLEBROOK 235 COASTAL FACADE

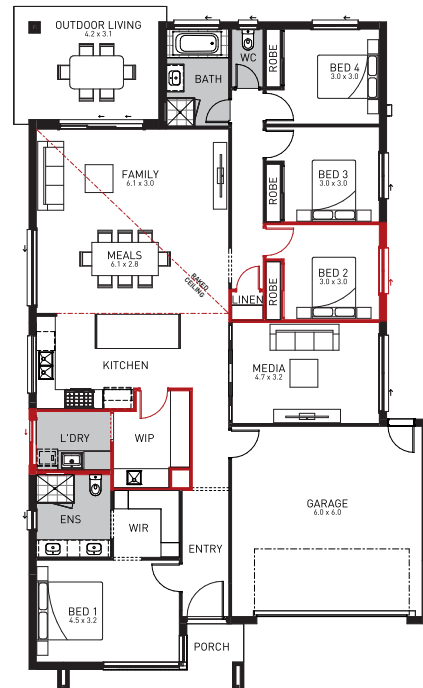
LOT:41, NO. 28 MERRYVALE CIRCUIT, LILYWOOD



### INCLUSIONS

- Orbit Homes Prestige Collection Inclusions
- Fully landscaped and automatic sprinkler system
- Exposed aggregate driveway and porch
- Reverse cycle ducted air conditioning with MyAir
- Light fittings as installed including feature pendant lights
- Smeg 900mm stainless steel appliances and 600mm dishwasher installed
- Luxe floor coverings as per plan
- Window coverings as installed
- Security alarm system
- Caesarstone benchtops to kitchen, bathrooms & laundry
- 2700mm high ceilings throughout

**PLUS many more Display Luxury Upgrades**



**Leanne Perucci**

E [leanne.perucci@orbithomes.com.au](mailto:leanne.perucci@orbithomes.com.au) M 0459 909 921

ORBIT HOMES QUEENSLAND PTY LTD • QBCC LICENCE NUMBER 716019.

Not too be used with any other offer. Excludes stamp duty & costs. Subject to lease agreement plus options 6 x 1 months for Orbit. 6% return (outgoings excluded). Rates & outgoings paid by buyer. Garden & house maintenance by Orbit. Excludes furniture & display items. Prestige Collection Inclusions based on time of build.

[orbithomes.com.au](http://orbithomes.com.au) | 1300 ORBITHOMES | 1300 672 484 |   



*Live your dream*